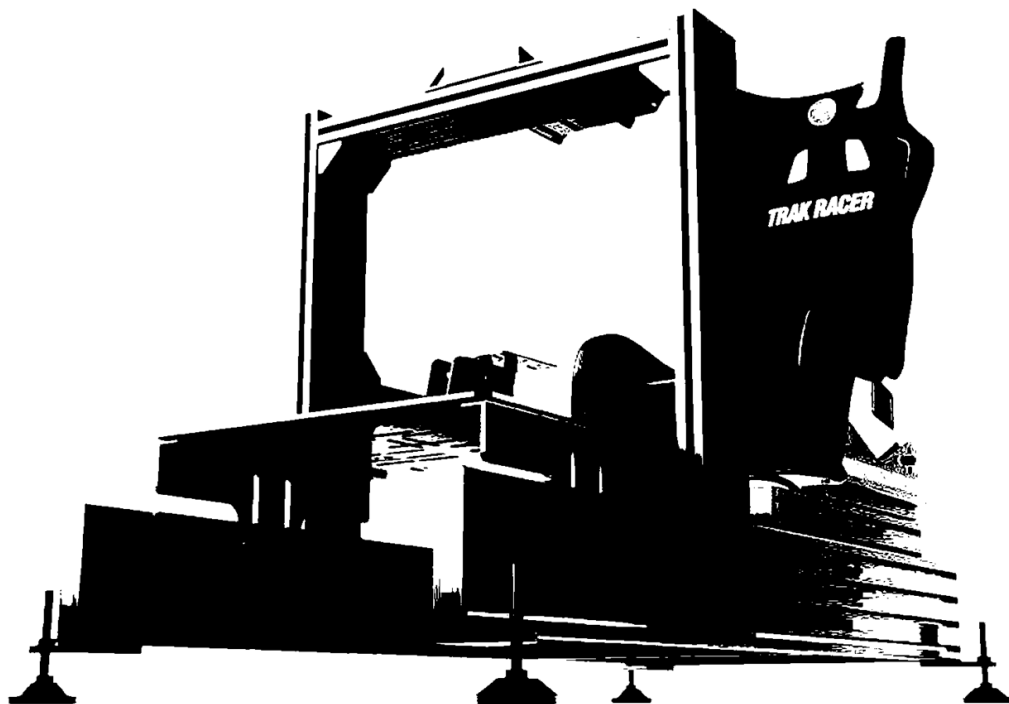


TR160

Manual

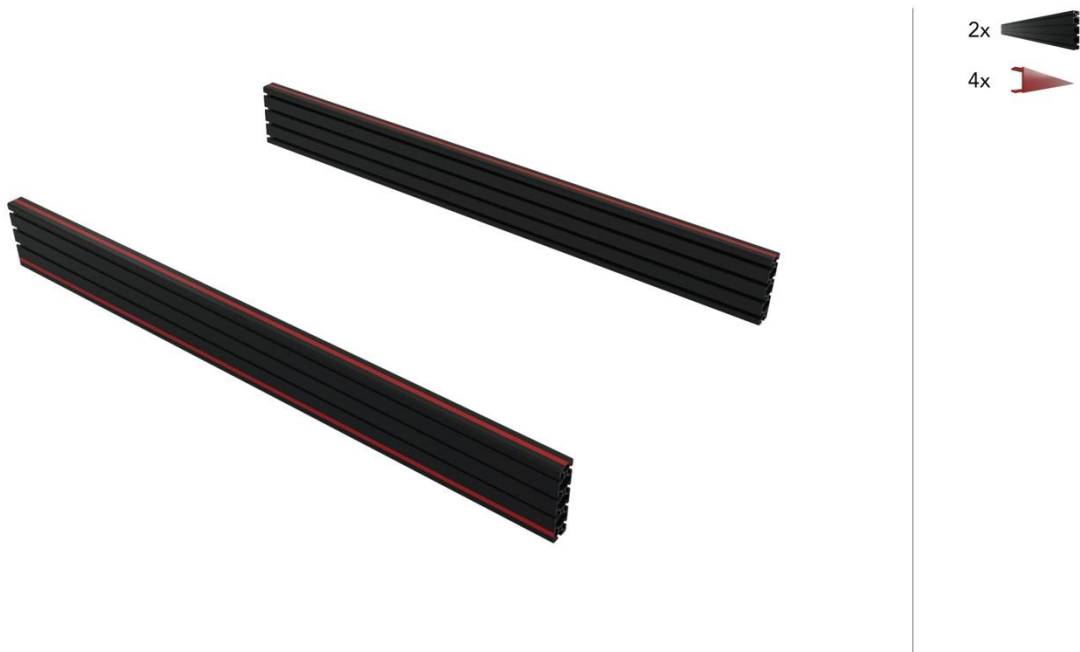


Note: in some steps we notify you when longer bolts are needed instead of the standard M8x16. If no bolt size is mentioned the standard M8x16 bolt should be used.

STEP 2

Lay down the 1400mm profiles next to each other and remove the red striping from the main profiles.

Note: those will be added later on after we are done building.



STEP 3

Attach the feet to the main profiles using the listed parts, as shown below
The profiles and feet should look like shown in the bottom picture after assembly.

Note: M8x25 bolts need to be used on this step.

Caster wheels are optional (TR80-WHEELSET)



STEP 4

Add the listed parts to the 500mm middle profile before placing it inbetween as shown below



- 1x 
- 16x 
- 8x 
- 16x 
- 16x 
- 16x 

*Note: make sure to break off the taps in the corner brackets with a flat screwdriver if they **don't** sit flush on the aluminium profile as demonstrated here*



STEP 5

Attach the 500mm end profile with the listed parts as shown below

Note: M8x25 bolts need to be used on this step. the branded plate can be mounted as optional by sliding it in from the side before attaching it to the build.



When you completed step 5 your build should look like this:



STEP 6

Place two 580mm profiles on top of the existing square as shown below

Note: its usefull to have the cornerbracket all the way to both ends to create a perfect square. This wil help with aligning the seatrails in step 7



- 2x 
- 2x 
- 8x 
- 4x 
- 8x 
- 8x 
- 8x 

After adding the parts in step 6 your build should look like this:



STEP 7

Add the seat slider and brackets as shown below.

After fitting the leaver, test if the rails can slide easily without any rubbing.

Note: If you are a tall person its advised to use mount the rails as shown below. If you are short its advised to mount the rails on the most forward end of the profile.

Start with placing the rails with the flat side upwards and the metal protrusions facing inwards. The leaver should be pulled upwards to unlock the rails.

Now slightly fasten the front bolt of the rails just enough to keep it in position but allow the rails to swivel at the back slightly to align the back bolt without any tension.

Now use a screwdriver (or the leaver) on the metal protrusions on the inside to slide the rails forward to gain acces to the back bolt, now fully tighten the back bolt.

If that bolt is tightend slide the rails backwards again to regain acces to the front bolt and fully tighten it. After fully tightening the rails bring the rails back to the neutral position and mount the other side in the same way.

After both rails are in neutral position and tightend its time to add the leaver.

The leaver needs to be bend outwards a bit further than the actual width of both rails.

Now place one side with the holes in the protrusions with the other side just above the rails and apply a bit of force inwards to overcome the resilience, now allign the leaver with the other end of the rails protrusions.

If the leaver is placed and it unlocks/locks the rails correctly continue mounting the seatbrackets.



STEP 8

add the seat (GT style shown below) to the bracket and test if you can freely adjust your seating position with the lever.

Note: If this doesn't go smoothly realign the seatbrackets to have it mounted without any in or outwards tension.



1x



4x



STEP 9

Add the 780mm profiles with the listed parts as shown below.



2x



32x



4x



32x



32x



STEP 10

Add the 580mm and 400mm profile with the listed parts as shown below.

Note: right side is illustrated but you could also choose to mount this on the left side.



- 1x 
- 1x 
- 22x 
- 2x 
- 3x 
- 16x 
- 22x 
- 22x 

Optional: If you want to mount an extra profile this part can be ordered online with partnumber: TR80-SMEX-BLK

STEP 11

Attach the shiftermount to the frame with the listed parts as shown below.

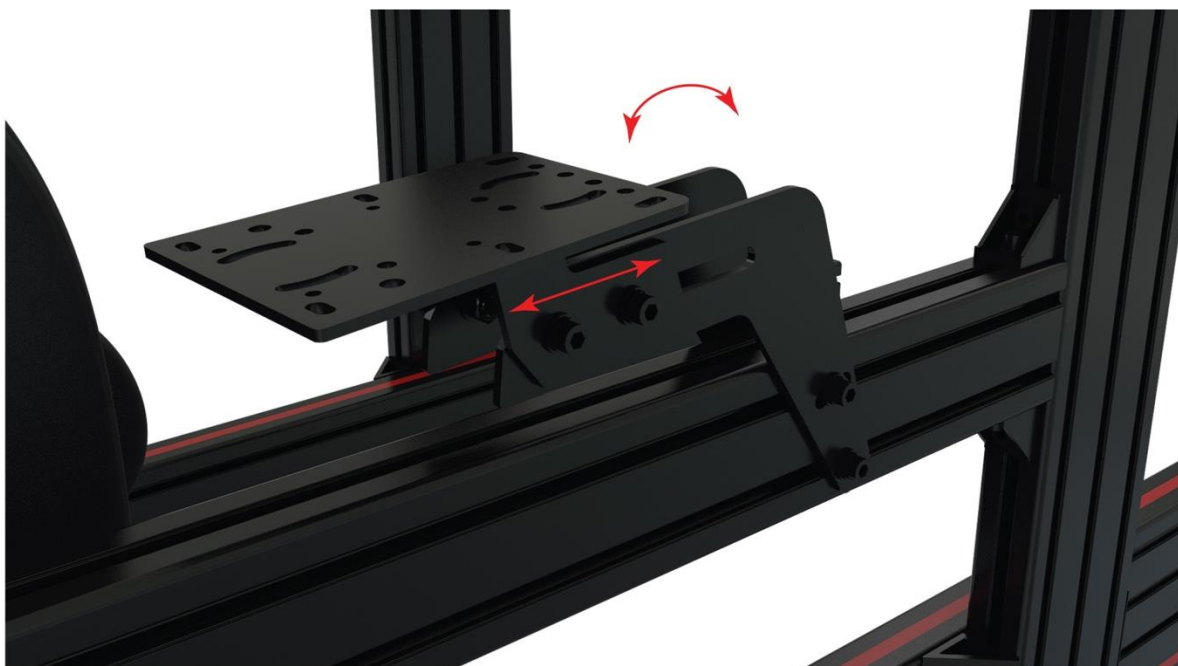
Note: 4x M8x20 bolts should be used to mount the shiftermount to the L shaped bracket. 4x M8x16 is used to secure the L shaped bracket to the profile.



- 4x 
- 2x 
- 1x 
- 4x 
- 8x 
- 8x 
- 8x 

Before fully tightening the shiftermount see below for adjustability options.

Note: adjusting can also be done with the shiftermount mounted.




STEP 12

This step is for the TR160 with the normal wheeldeck

Follow step 13 for the DD wheeldeck or step 14 for Fanatec DD Wheeldeck.

Note: for more detailed assembly steps of this wheelmount please consult the TR80-WM-BLK-1 manual online.




1x 580mm 	1x 250mm 	2x 	1x 	24x TR80-SCREWNUT 	4x M8 Nut 	2x 120 x 40mm 
4x TR80-BABS 	4x 	8x M8 Ring 	28x M8 Ring 	28x M8*16 	2x 	



STEP 13

This step is for the TR160 with the direct drive wheeldeck

Note: for more detailed assembly steps of this wheelmount please consult the TR80-DDM manual online.

<div></div>													
2x		2x		2x		1x		8x	 TR80-SCREWNUT	8x	 M8 Nut	4x	 TR80-BABS
4x		12x M8*16		8x M8*16		2x TR80-HANDLE							



STEP 14

This step is for the TR160 with the Fanatec direct drive wheeldeck

Note: for more detailed assembly steps of this wheelmount please consult the TR80-FANDDWM manual online.



2x		2x		2x		1x		1x		8x		8x	
4x		4x		10x		8x		2x					
	TR80-BABS				MB*16		MB*16		TR80-HANDLE				



STEP 15

Add the pre assembled side support structures of the pedalplate to the main profiles and place the pedalplate on top as shown below.

Following step 16 before adding the pedalplate can be done also (depending on personal preference).

Note: a raised pedalplate(as pictured here) for a formula pedal position can be used optional and ordered with partnumber: TR160-F1PEDALUP



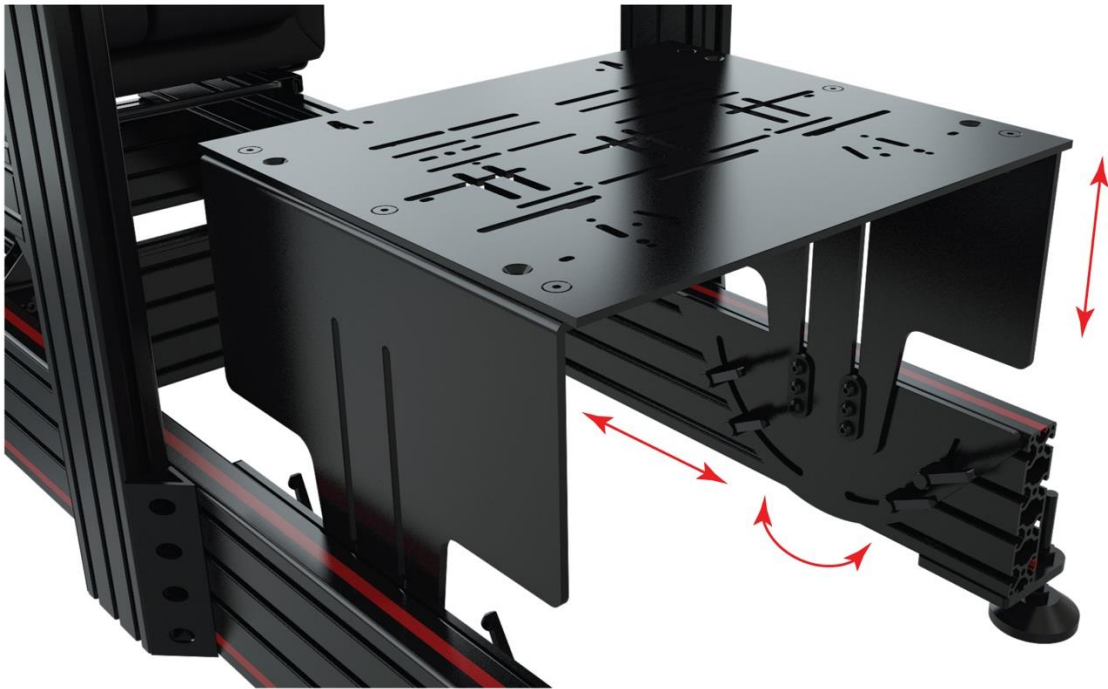
- 12x 
- 2x 
- 2x 
- 4x 
- 12x 
- 12x 
- 6x 
- 1x 
- 6x 

STEP 16

Slide the T - Nuts into the main profiles and tighten the upright structure with the handles as shown below.



The pedalplate can be adjusted towards your likings as shown below



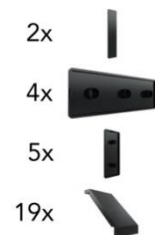
Almost there!

Now its time to personalize the seating/wheelmount and pedalplate towards your likings. Every component can be adjusted to personal preference as shown below.



STEP 17

Add end caps on the outer ends of the profiles and brackets.
Also measure up the red lining and cut this to desired lengths to fit the profile on desired spots.



That's it, you are done!

We wish you a lot of fun with your freshly built simulator.

Thank you for choosing Trak Racer